



# Agilent M9155/6/7C PXI Hybrid Switch Modules

**DISCOVER** the Alternatives...

## Industries and Applications

- Automatic Test Equipment (ATE)
- RF communications
- Engineering verification
- RF parametric measurements
- Mid and high density switching systems

## Product Description

M9155/6/7C is a series of PXI hybrid switch modules based on the PXI Hybrid platform. Operating from DC to 26.5 GHz, these modules come with guaranteed 0.03 dB insertion loss repeatability throughout the operating life.

### Models

M9155C	PXI Hybrid Dual SPDT Coaxial Switch, DC to 26.5 GHz, Unterminated
M9156C	PXI Hybrid Dual Transfer Switch, DC to 26.5 GHz
M9157C	PXI Hybrid Single SP6T Switch, DC to 26.5 GHz, Terminated

## Main Features and Benefits

Product features	Your benefit
A readily scaled integrated switching solution to satisfy your unique application platform needs	Peace of mind in switch technology from Agilent who has a proven track record for providing versatile, quality RF and microwave switches
Guaranteed 0.03 dB insertion loss repeatability throughout the operating life of up to 10 million cycles	Reduce downtime for recalibration, improve testing efficiency and hence maximize throughput
Unmatched isolation of 60 dB at 26.5 GHz	Maximize measurement accuracy and system flexibility
Soft front panel is available for each switch module	The embedded graphical user interface ease the troubleshooting of your PXI systems

Connector compatibility: PXI-H, PXI-1, cPCI



... Agilent **MODULAR** Products

## Specifications

Hardware		
Size	M9155C	1 slot wide
	M9156C	2 slots wide
	M9157C	3 slots wide
Frequency	DC to 26.5 GHz	
Insertion loss*	0.42 dB at 8 GHz 0.57 dB at 18 GHz 0.70 dB at 26.5 GHz	
Insertion loss repeatability	< 0.03 dB	
Guaranteed operating life	5 million cycles for M9155C 2 million cycles for M9156/7C	
Typical operating life	10 million cycles for M9155C 5 million cycles for M9156/7C	
Isolation*	90 dB at 8 GHz 65 dB at 18 GHz 60 dB at 26.5 GHz	
VSWR*	1.35 at 8 GHz 1.45 at 18 GHz 1.70 at 26.5 GHz	
Impedance	50 Ω	
RF connector	3.5 mm (f) for M9155C SMA (f) for M9156/7C	

Note: \*Refer to data sheet 5990-6269EN for detailed technical specifications.



**Agilent Technologies**

## Software

Software development platform	Visual Studio®, C, C++, C#, Visual Basic®, LabVIEW, LabWindows/CVI, MATLAB®, VEE
Supported operating systems	Microsoft Windows® XP SP3, (32-bit), Windows® Vista, (32-bit and 64-bit) Windows® 7 (32-bit and 64-bit)
Included device drivers	IVI-COM, IVI-C, LabVIEW, MATLAB®
Included GUI	Soft front panel
Application code examples	C, C++, C#, Visual Basic®, VEE, MATLAB®

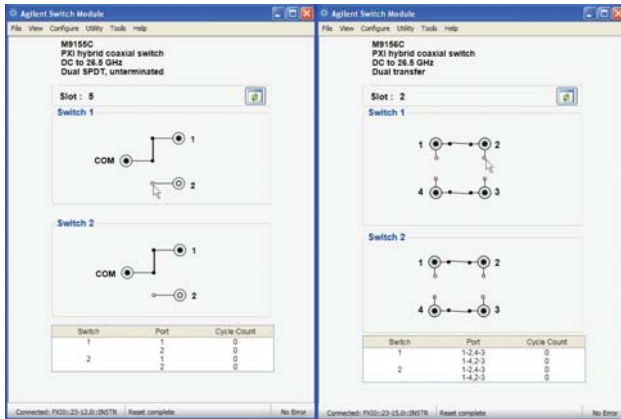
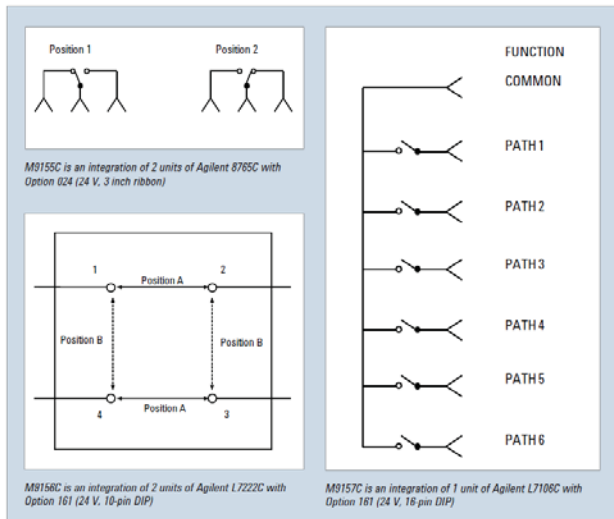


Figure 1. Soft Front Panel for M9155/6/7C.



PXI is a registered U.S. trademark of PXI Systems Alliance. Visual Studio, Visual C, C++, and C#, and Visual Basic are registered trademarks of Microsoft Corporation. Windows and MS Windows are U.S. registered trademarks of Microsoft Corporation. MATLAB is a U.S. registered trademark of The Math Works, Inc.

## Ordering Information

Model	Description
<input checked="" type="checkbox"/> M9018A	PXIe Chassis, 18- slots, 3U, 8 GB/s
<input checked="" type="checkbox"/> M9155C	PXIh Coaxial Switch, DC-26.5 GHz, Dual SPDT, Unterminated
<input checked="" type="checkbox"/> M9156C	PXIh Coaxial Switch, DC to 26.5 GHz, Dual Transfer
<input checked="" type="checkbox"/> M9157C	PXIh Coaxial Switch, DC to 26.5 GHz, Single SP6T, Terminated
<input checked="" type="checkbox"/>	<i>Recommended configuration</i>

## Related products

M9392A	PXI Vector Signal Analyzer
M9302A	PXI Local Oscillator
M9351A	PXI Downconverter (50 MHz to 2.9 GHz)
M9360A	PXI Attenuator/Preselector
M9361A	PXI Downconverter (2.75 GHz to 26.5 GHz)

## Advantage Services: Calibration and Warranty

Agilent Advantage Services is committed to your success throughout your equipment's lifetime.

R-51B-001-C	1 year Return-to-Agilent warranty
-------------	-----------------------------------

## DISCOVER Agilent ...



[www.agilent.com](http://www.agilent.com)

[www.agilent.com/find/modular](http://www.agilent.com/find/modular)

[www.agilent.com/find/PXIswitch](http://www.agilent.com/find/PXIswitch)

USA: (800) 829-4444

For more information on Agilent Technologies' products, applications, or services, please contact your local Agilent office. The complete list is available at: [www.agilent.com/find/contactus](http://www.agilent.com/find/contactus)

Product specifications and descriptions in this document subject to change without notice.

© Agilent Technologies, Inc. 2010 Printed in USA, March 3, 2011  
5990-6170EN



**Agilent Technologies**